

Course Description

CX

Mark1 . . . - MarkN

Course displayed on the stern of the committee boat

Course Designation (CX)

W1 - Windward/Leeward - one windward mark, downwind finish

W2 - Windward/Leeward - one windward mark, one leeward mark, upwind finish

W3 - Windward/Leeward - one windward mark, one leeward gate, upwind finish

TR - Triangular - Leave marks to port side (red)

TG - Triangular - Leave marks to starboard (green)

note: combine these designations for more courses

(e.g. W2TR - Windward/Leeward followed by Triangular)

Turning Mark Sequence (Mark1-MarkN)

107, 109, etc. - Government Navigational Aids

Y - Yellow inflatable - Typically used to mark port end of starting line

O - Orange inflatable

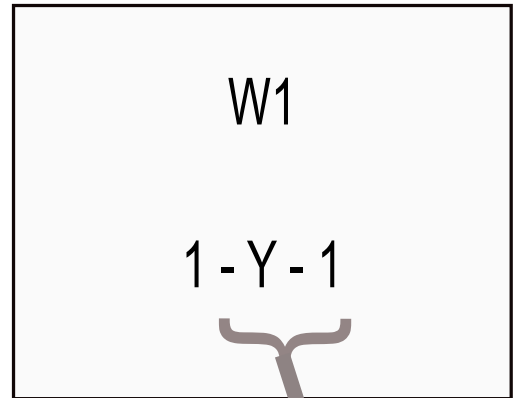
ONEIDA LAKE SAILING CLUB

W1 - Windward/Leeward

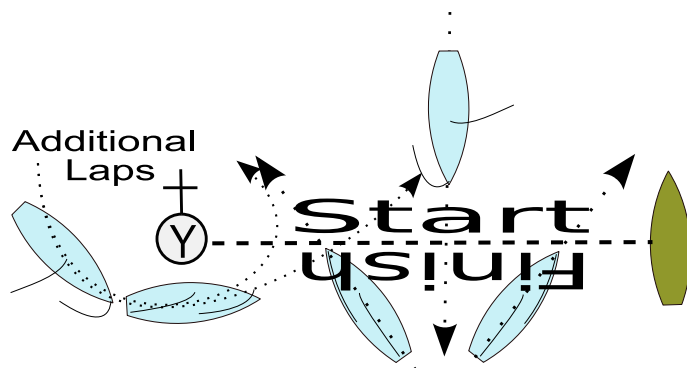
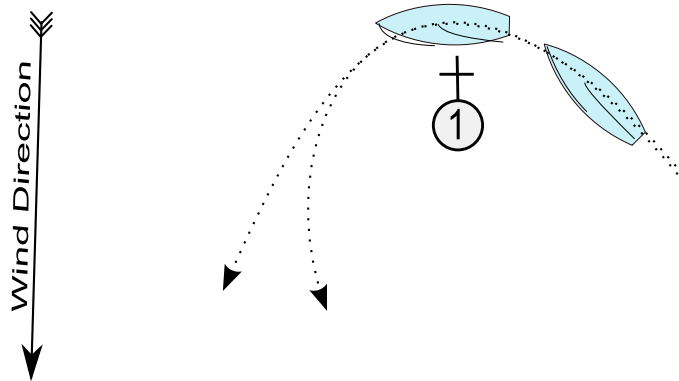
- One windward mark
- Downwind finish

Committee Boat:

- Display red flag - Leave windward mark to port



Additional Laps



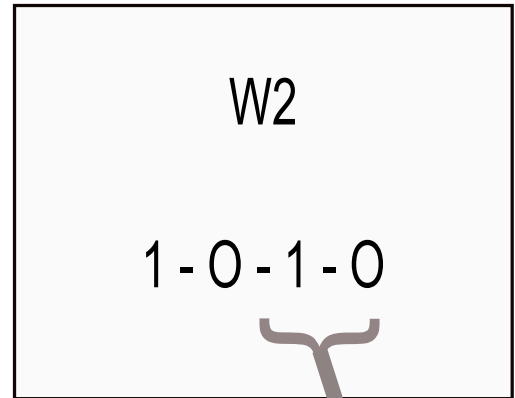
ONEIDA LAKE SAILING CLUB

W2 - Windward/Leeward

- One windward mark
- One leeward mark
- Upwind finish

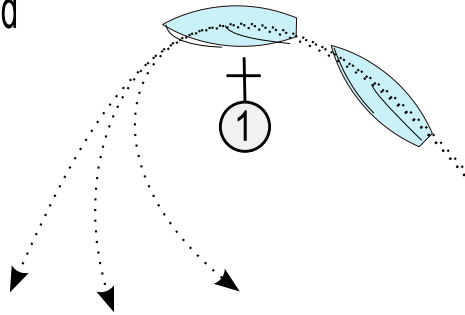
Committee Boat:

- Display red flag - Leave windward mark to port
- Start/Finish Line is closed

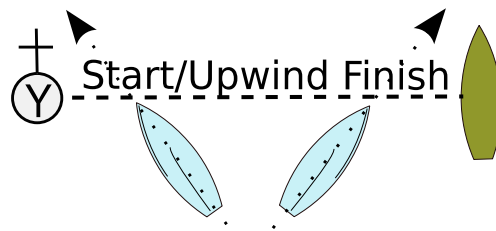


Wind Direction

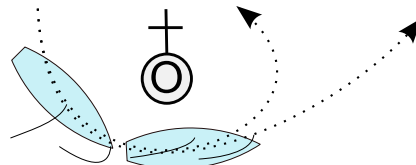
A vertical arrow pointing downwards, with the text "Wind Direction" written vertically along its shaft.



Line is closed except to start or finish



Line is closed except to start or finish



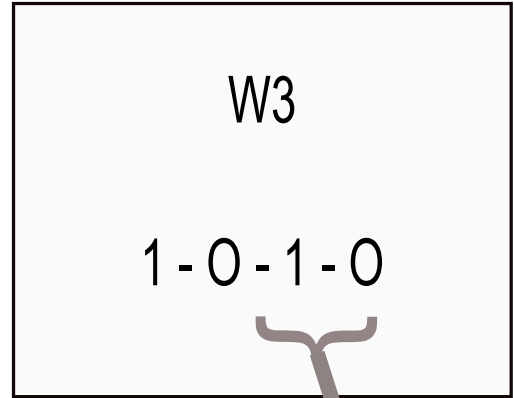
ONEIDA LAKE SAILING CLUB

W3 - Windward/Leeward

- One windward mark
- One leeward gate
- Upwind finish

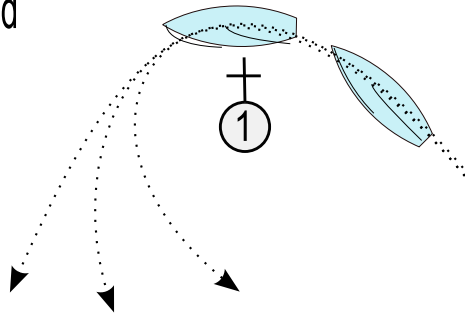
Committee Boat:

- Display red flag - Leave windward mark to port
- Start/Finish Line is closed

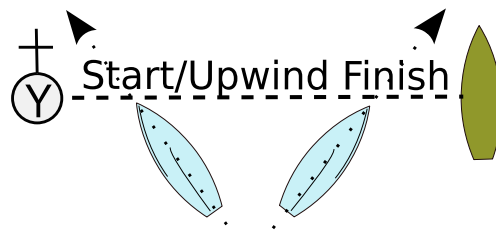


Wind Direction

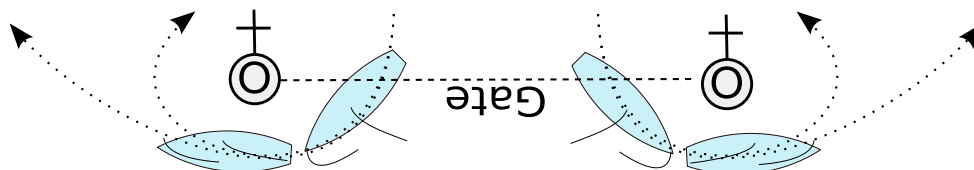
A vertical arrow pointing downwards, labeled "Wind Direction".



Line is closed except to start or finish



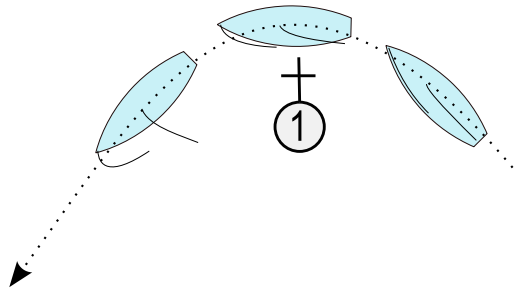
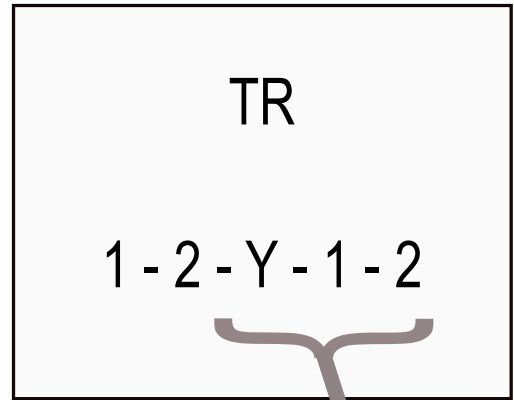
Line is closed except to start or finish



ONEIDA LAKE SAILING CLUB

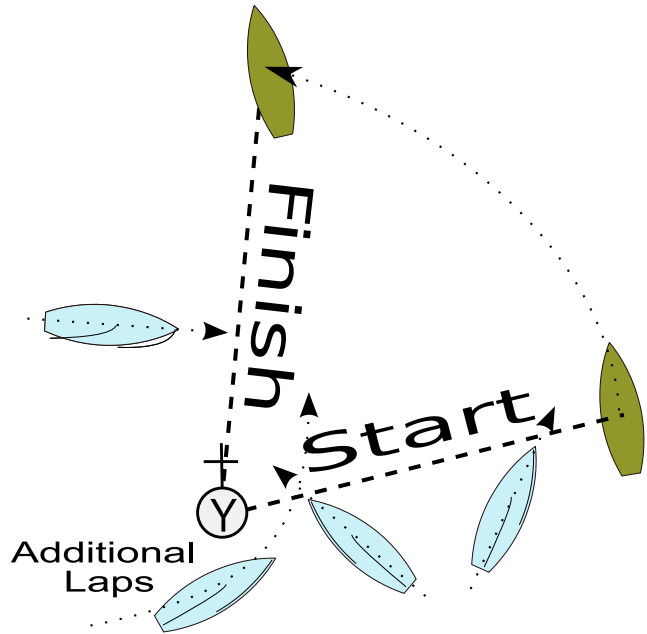
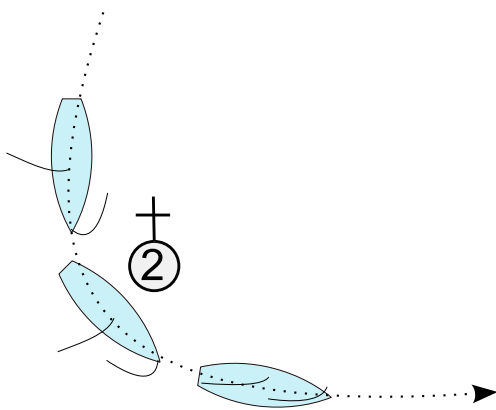
TR - Triangular Red

- Leave marks to port



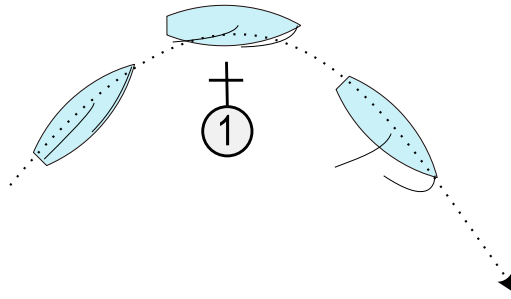
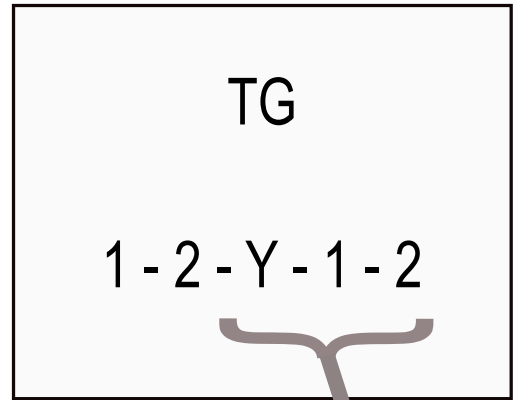
Committee Boat:

- Display red flag - Leave marks to port
- Move up to finish line position after start

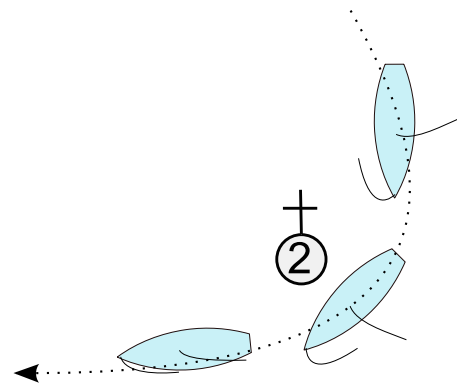
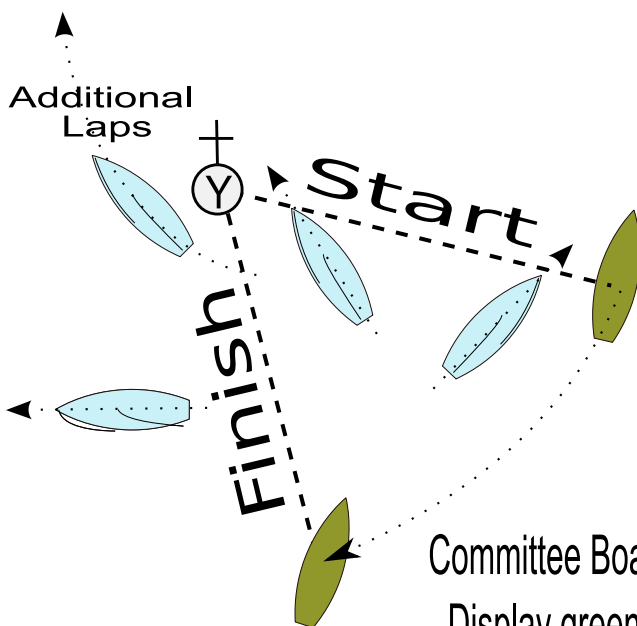


ONEIDA LAKE SAILING CLUB

TG - Triangular Green
- Leave marks to starboard



Additional Laps



Committee Boat:

- Display green flag - Leave marks to starboard
- Move back to finish line position after start